

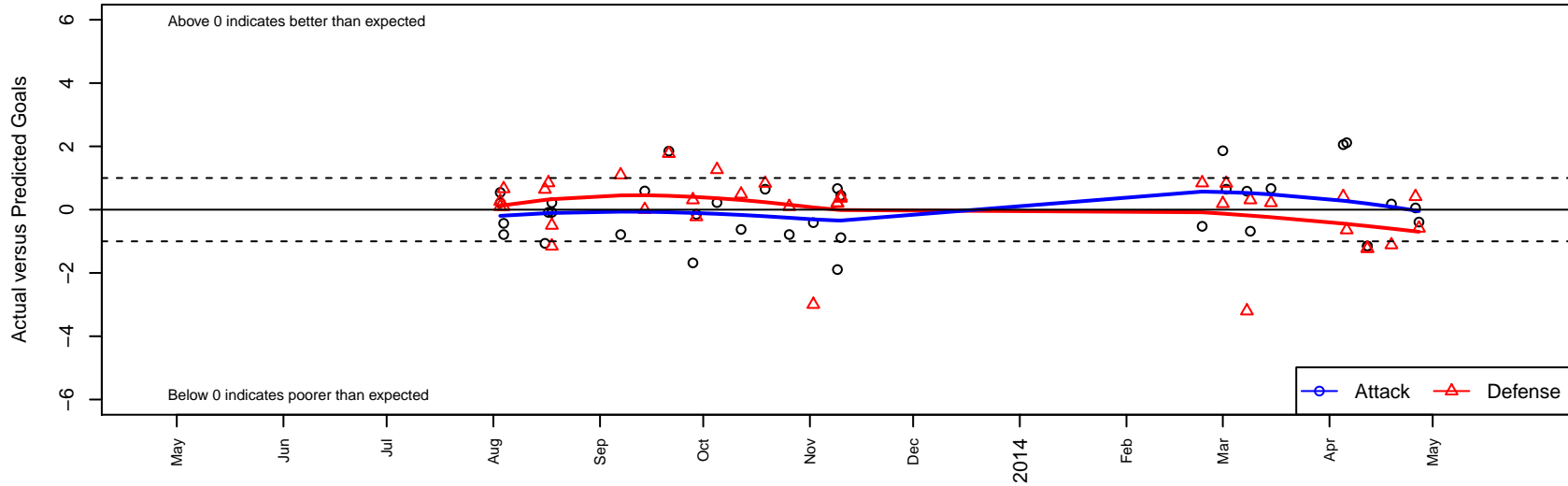
# FC Columbia County G01

, OR  
 G01 total strength=454  
 attack=0.32 defense=0.28  
 fall league = Spr OYS G01 Spring White, OYS I  
 alt names used:

Venues played:  
 Cowlitz Kickoff GU12  
 Mt Hood Challenge GU12 Bronze  
 PML G01 U12  
 Hillsboro Invitational GU12  
 Spr OYS G01 Spring White  
 OYS Presidents Cup G01



**FC Columbia County G01**  
 Dots are actual minus expected GF (blue circles) and GA (red triangles).  
 Blue line is smoothed change in attack strength. Red is smoothed change in defense strength.



	date	home		away		venue	pred.home	pred.away
7814	2014-04-27	Irish United G01	5	FC Columbia County G01	0	OYS Presidents Cup G01	4.41	0.39
7783	2014-04-26	FC Columbia County G01	2	Westside Timbers Samba G01	0	OYS Presidents Cup G01	1.95	0.41
7744	2014-04-19	Capital FC Timbers White G01	2	FC Columbia County G01	1	OYS Presidents Cup G01	0.89	0.82
7669	2014-04-12	FC Columbia County G01	0	W AFC Cobras G01	3	OYS Presidents Cup G01	1.15	1.77
7671	2014-04-12	FC Columbia County G01	0	W AFC Cobras G01	3	OYS Presidents Cup G01	1.15	1.77
7630	2014-04-06	FC Columbia County G01	4	PCU Black G01	1	Spr OYS G01 Spring White	1.88	0.36
7598	2014-04-05	FC Columbia County G01	4	Westside Timbers Samba G01	0	Spr OYS G01 Spring White	1.95	0.41
7413	2014-03-15	PCU White G01	0	FC Columbia County G01	3	Spr OYS G01 Spring White	0.22	2.33
7358	2014-03-09	THSSP Blue Thorns G01	0	FC Columbia County G01	1	Spr OYS G01 Spring White	0.31	1.68
7315	2014-03-08	Kidsport Rolling Thunder G01	5	FC Columbia County G01	1	Spr OYS G01 Spring White	1.80	0.42
7253	2014-03-02	FC Columbia County G01	2	Washington Timbers Crimson G01	0	Spr OYS G01 Spring White	1.35	0.83
7202	2014-03-01	FC Columbia County G01	3	Bend FC Timbers White G01	1	Spr OYS G01 Spring White	1.14	1.19
7155	2014-02-23	Westside Timbers Samba TS G01	0	FC Columbia County G01	2	Spr OYS G01 Spring White	0.84	2.53
6529	2013-11-10	PCU Black G01	0	FC Columbia County G01	1	Hillsboro Invitational GU12	0.36	1.88
6531	2013-11-10	FC Columbia County G01	2	NEU Barcelona Blue G01	0	Hillsboro Invitational GU12	1.55	0.40
6463	2013-11-09	FC Columbia County G01	2	HSC Storm G01	0	Hillsboro Invitational GU12	3.89	0.20
6464	2013-11-09	PCU White G01	0	FC Columbia County G01	3	Hillsboro Invitational GU12	0.22	2.33
6360	2013-11-02	CYSA Timber Barons Green G01	4	FC Columbia County G01	0	PML G01 U12	1.00	0.41
6212	2013-10-26	FC Columbia County G01	0	CYSA Timber Barons White G01	1	PML G01 U12	0.79	1.10
6050	2013-10-19	Washington Timbers Crimson G01	0	FC Columbia County G01	2	PML G01 U12	0.83	1.35
5899	2013-10-12	FC Columbia County G01	0	Washington Timbers Burgundy G01	1	PML G01 U12	0.63	1.49
5705	2013-10-05	Albany FC The Fury G01	0	FC Columbia County G01	1	PML G01 U12	1.26	0.78
5606	2013-09-29	W AFC Cobras G01	2	FC Columbia County G01	1	PML G01 U12	1.77	1.15
5536	2013-09-28	FC Columbia County G01	0	THSSP Blue Thorns G01	0	PML G01 U12	1.68	0.31
5397	2013-09-21	FC Columbia County G01	3	W AFC Cobras G01	0	PML G01 U12	1.15	1.77
5231	2013-09-14	FC Columbia County G01	1	CYSA Timber Barons Green G01	1	PML G01 U12	0.41	1.00
5090	2013-09-07	FC Columbia County G01	0	CYSA Timber Barons White G01	0	PML G01 U12	0.79	1.10
4835	2013-08-18	FC Columbia County G01	1	Pacific FC Force G01	2	Mt Hood Challenge GU12 Bronze	1.09	0.85

	<b>date</b>	<b>home</b>		<b>away</b>		<b>venue</b>	<b>pred.home</b>	<b>pred.away</b>
4848	2013-08-18	FC Columbia County G01	2	ASE McDonald G01	1	Mt Hood Challenge GU12 Bronze	1.78	0.51
4770	2013-08-17	Pacific FC Force G01	0	FC Columbia County G01	1	Mt Hood Challenge GU12 Bronze	0.85	1.09
4727	2013-08-16	FC Columbia County G01	0	Aloha United SC Earthquakes G01	0	Mt Hood Challenge GU12 Bronze	1.06	0.64
4559	2013-08-04	Explosion -Unk G01	0	FC Columbia County G01	1	Cowlitz Kickoff GU12	0.66	1.43
4560	2013-08-04	CYSA Timber Barons White G01	1	FC Columbia County G01	0	Cowlitz Kickoff GU12	1.10	0.79
4506	2013-08-03	Lewis County Volcano SC Blue Ice G01	0	FC Columbia County G01	5	Cowlitz Kickoff GU12	0.26	4.46
4507	2013-08-03	FC Columbia County G01	1	CYSA Timber Barons White G01	1	Cowlitz Kickoff GU12	0.79	1.10